

# EX 92009/94009/98009 USB - Serial Adapter

# User Manual

## Version 1.0

### Introduction

Thank you for purchasing the USB to Serial Adapter. This unique cable allows you to use bridge/connectivity between the Universal Serial Bus (USB) and Serial Port interface.

The USB to Serial Bridge Cable is your fast solution to utilize the peripheral with serial port in an easy-to-use environment such as plug-n-play and hot swap function. This cable provides ideal connections to Modems, PDA, Digital Camera, Label printer or ISDN terminal adapters with over 1Mbps data transfer rate.

### Package Content

- Hardware: USB to Serial Adapter
- CD Driver
- User's Manual

### Product Features

- USB specification revision 1.1 compliant
- Support the RS232 Serial interface · Over 1Mbps data transfer rate
- Support remote wake-up and power management
- Single chip (ASIC) USB to Serial communication

### System Requirements

- IBM PC 486DX4-100 MHz CPU or higher or compatible system
- Available USB port
- CD-ROM drive installed
- Windows 98SE / ME / 2000 / XP

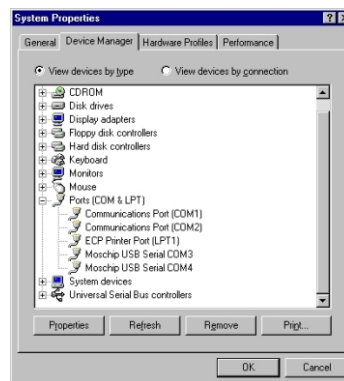
### Driver Installation (WIN98&ME)

Follow the steps below on installing the USB to Serial Adapter for the first time:

1. Power on both computers where you will connect the USB to Serial Adapter and make sure that the USB port is enabled and working properly.
2. Please insert the CD driver in the CD/DVD ROM.
3. Plug in the USB cable into the USB port and Windows will detect an USB Device and run the Add New Hardware Wizard to assist you in setting up the new USB Composite Device.
  - a. Select **Search for the best driver for your device** and click Next.
  - b. Select **Specify a location** and click Browse. Change the folder of your CD-ROM drive (depend on your product)  
D:\USB to IO\EX92009\Win98&ME .....EX92009  
D:\USB to IO\EX94009\Win98&ME .....EX94009  
D:\USB to IO\EX98009\Win98&ME .....EX98009  
And click OK.
  - c. Double check the directory that Windows prompts. Click Next.
  - d. Windows will detect the driver (USB2SER.inf) and shows the USB to Serial Adapter. Click NEXT to continue until installation is complete.
  - e. Click Next to continue and let Windows copy the needed files to your hard disk. Click Finish while installation is complete.

- f. After installing, the System will generate an additional COM Port, USB to Serial Port (COM3~COM10 depend on the product) for the connection to RS232 Serial Device.

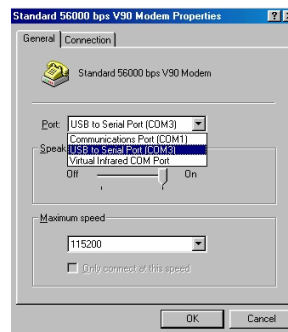
\* Please read the file to start detailed installation step from CD-ROM.  
(D:\USB Adapter\EX92009\MCS7715\_app\_98se\_me.pdf)



### Setting Up the RS232 Serial Device

Follow the steps below how to connect your RS232 Serial Device (ie: Modem) to the USB port of your PC:

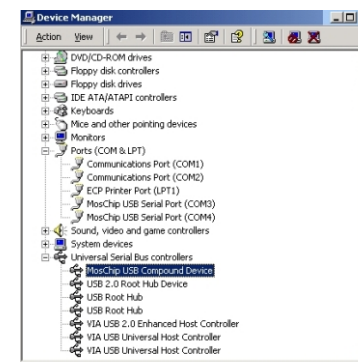
1. Turn off your Modem. Plug the D-Sub 9 connector of the USB to Serial Adapter Cable into your Modem. If you have a Serial cable connected to it, remove the cable and replace it with the USB to Serial Adapter. Turn on the Modem afterwards.
2. Turn on your computer and plug in the USB connector of the USB to Serial Adapter Cable into the USB port.
3. If you have already installed a Modem device before, click Start, Settings, Modems. Open Modems Properties, select the Modem, click Properties. In General tab, please change the Port value to USB to Serial Port (COM3).
4. After finishing these processes, you can use USB to Serial Adapter Cable to connect RS232 Serial 56K FAX Modem and execute the Dial-up function to connect Internet, and send the FAX with the FAX software (ie: Microsoft FAX) properly.



### Driver Installation (WIN2000/XP)

Follow the steps below to install driver of USB-Serial Adapter:

1. Power on your computer and make sure that the USB port is enabled and working properly.
  2. Please insert the CD driver in the CD/DVD ROM.
  3. Plug in the USB cable into the USB port and Windows will detect an USB Device and run the Add New Hardware Wizard to assist you in setting up the new USB Composite Device.
    - a. Select **Search for a suitable driver for my device** and click Next.
    - b. Select **Specify a location** and click Browse. Change the folder of your CD-ROM drive (depend on your product)  
D:\USB to IO\EX92009\Win2k&xp .....EX92009  
D:\USB to IO\EX94009\Win2k&xp .....EX94009  
D:\USB to IO\EX98009\Win2k&xp .....EX98009  
And click OK.
    - c. Double check the directory that Windows prompts. Click Next.
    - d. Windows will detect the driver (USB2SER.inf) and shows the USB to Serial Bridge Cable. Click NEXT to continue until installation is complete.
    - e. Click Next to continue and let Windows copy the needed files to your hard disk. Click Finish while installation is complete.
    - f. After installing, the System will generate an additional COM Port. You have to check the Control Panel-System-Hardware-Device Manager-Ports [COM & LPT1] it will show an USB to Serial Port (COM3~COM10 depend on the product) for the connection to RS232 Serial Device.
- \* Please read the file to start detailed installation step from CD-ROM.  
(D:\USB Adapter\EX92009\MCS7715\_app\_2k\_xp.pdf)



### Disclaimer

Information in this document is subject to change without notice. The manufacturer does not make any representations or warranties (implied or otherwise) regarding the accuracy and completeness of this document and shall in no event be liable for any loss of profit or any other commercial damage, including but not limited to special, incidental, consequential, or other damages.

No part of this document may be reproduced or transmitted in any form by any means, electronic or mechanical, including photocopying, recording or information recording and retrieval systems without the express written permission of the manufacturer.

All brand names and product names used in this document are trademarks, or registered trademarks of their respective holders.